

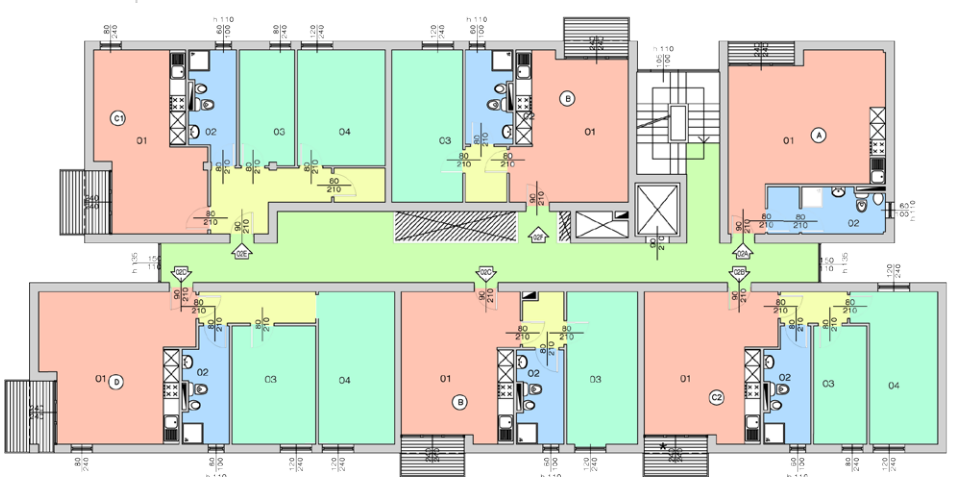
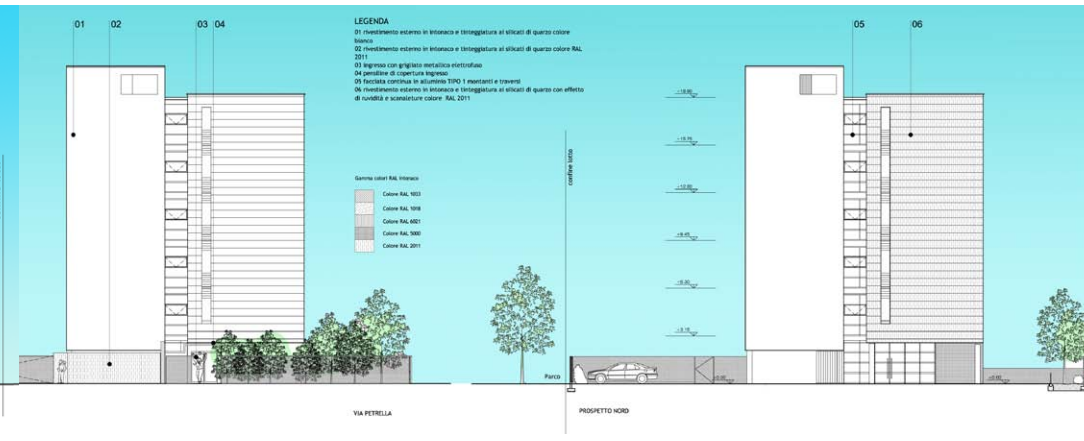
Collaboration with
Studio FGa (Milan) and
Acantus LW Architects (London)

2005

Definitive project of a residential building
in Cinisello Balsamo (MI).
Collaboration on the verification of the
building regulations, redesign of tables and
calculations.

land area = 1700 m²
total volume = 8325 m³
covered area = 500 m²





TIPOLOGIA	SUPERFICIE	UTENTI
A	38.9 MQ	1
B	61.5 MQ	3
C	50 MQ	2
D	74 MQ	4
E	68 MQ	3
F	50 MQ	2

