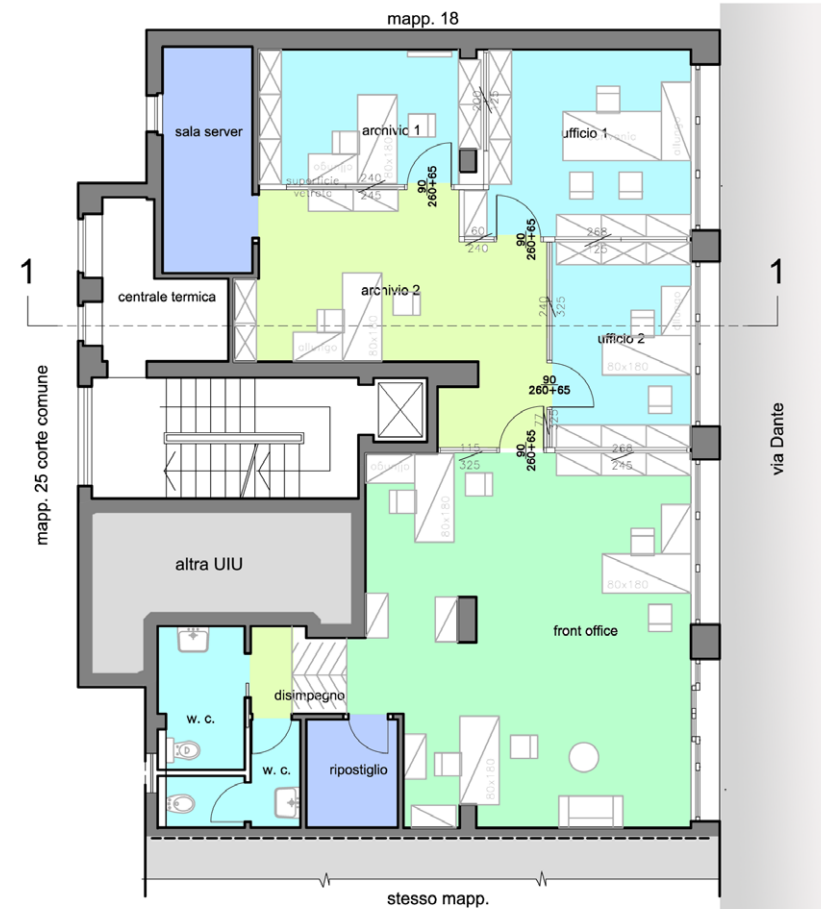
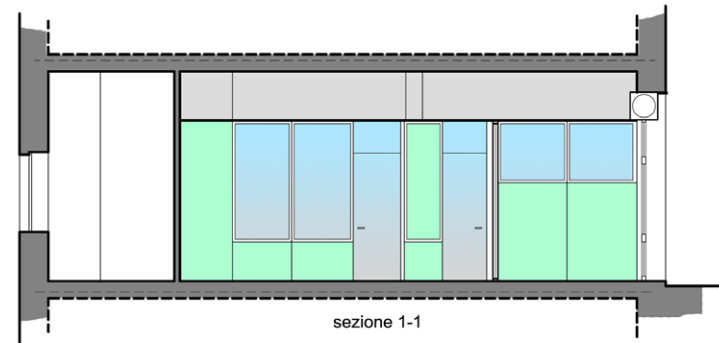
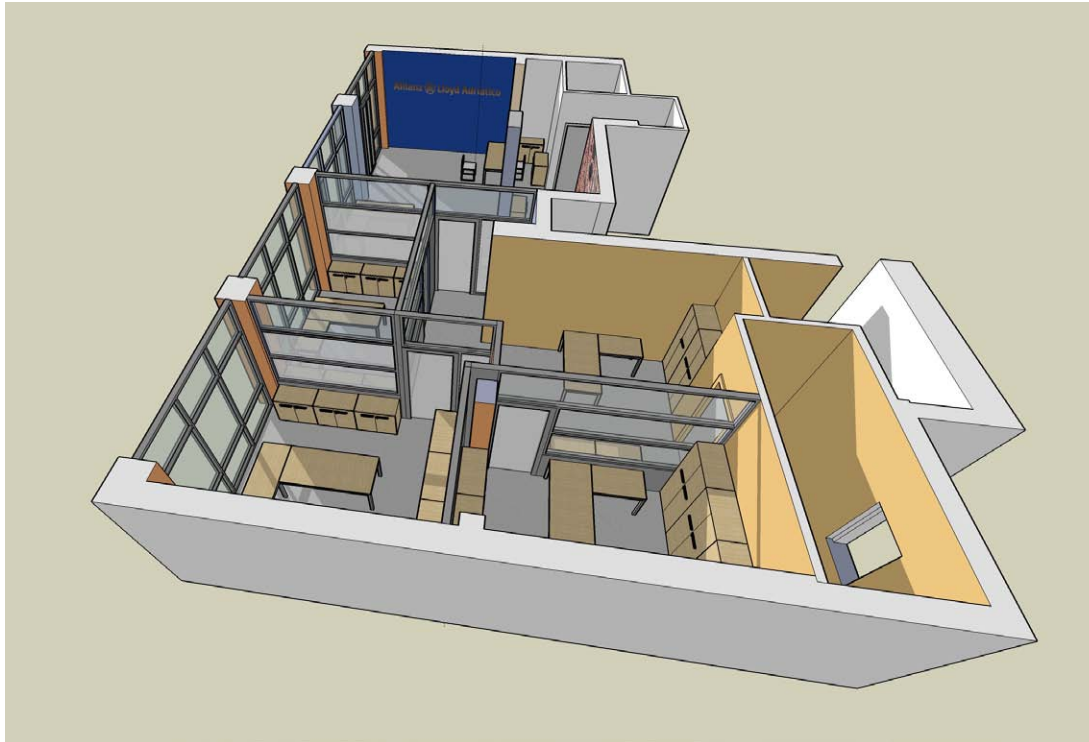


New office of an insurance agency
in Cremona
Allianz S.p.A. insurance company



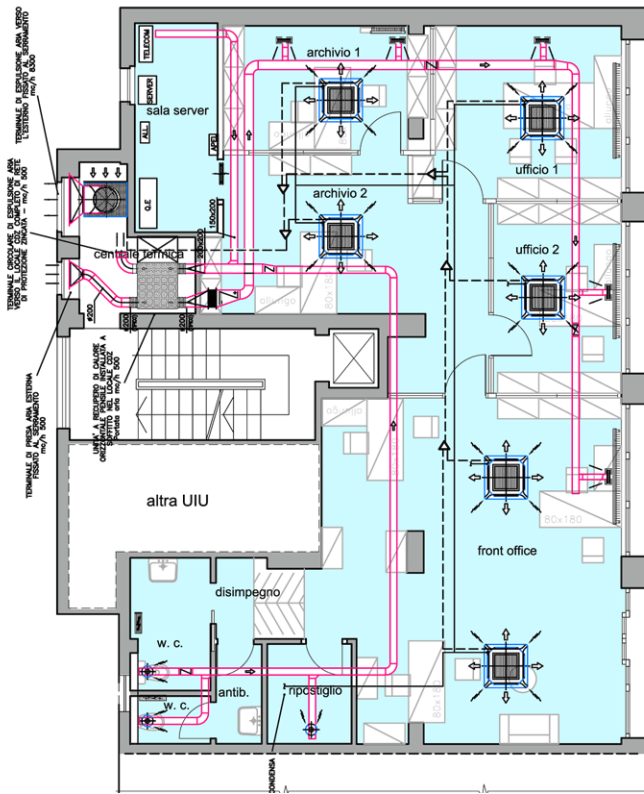
2012-2013

Complete rebuilding of internal walls: design of new furnitures disposition, suspended ceilings, electric and heating systems for the new office of an insurance agency (gross floor area 170 sqm); managing of communication and marketing aspects.

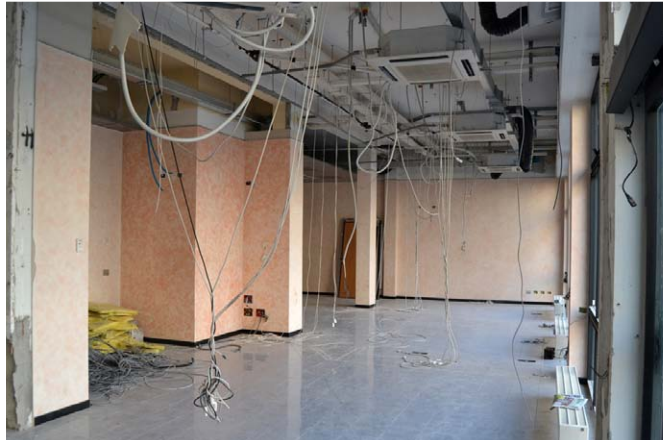


STATO DI PROGETTO

Project of the internal wall and design of furnitures disposition



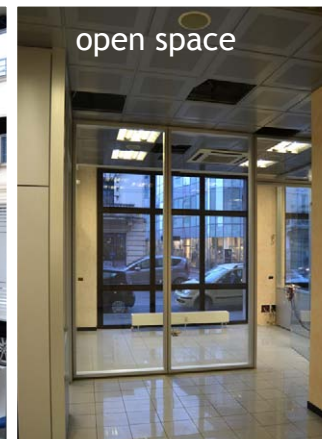
Project of the electrical and heating system



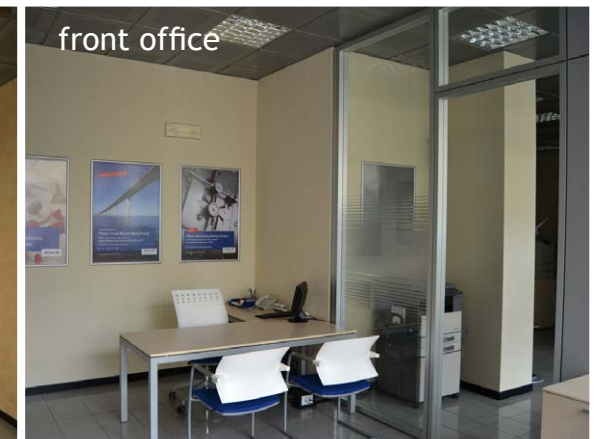
mounting of the light sign



direction office



open space



front office

